

DELIVERING THE BEST

F O R B A N G L A D E S H

work • Creative Thinking • Achievement Orientation • Selecting Right Principal/ Manufacturer • Highly Specialised Product Marketing • Creating A Success



Mashiur Rahman & Co. Ltd.

SINCE 1952



Mashiur Rahman & Co. Ltd.

FOUNDER OF

Mashiur Rahman & Co. Ltd.

Mr. Mashiur Rahman Known as Mashiur Bhai with his friends & family was born in March 28, 1928 in Jessore Town. Mr. Rahman began his career as the proprietor of **M/S. Mashiur Rahman** in 1952 and was enlisted in C& B Department, Housing & Settlement, Roads & Highways Department as a 1st class contractor and was enlisted 'A' class in 1976 in MILITARY ENGINEERING SERVICES Department. He was also a Founder Director of Nowapara Jute Mills Ltd. & Sardar Fish Processing Limited since 1967. It was neither the huge amount of capital nor a well situated modern establishment that earned the reputation from home and abroad but it was talent of highest order, a very clear conception about the subject of business and the untiring zeal & determination of this self made man contributed the establishment of this concern. Late Mr. Rahman, a man of rare caliber and an undaunted entrepreneur breathed his last at Holy Family Red Cross Hospital, Dhaka, under treatment on 10th March 1987.



MANAGING DIRECTOR OF

Mashiur Rahman & Co. Ltd.

Mr. Sabbir Hassan, the present Chairman and Managing Director, son of Late. Mr. Mashiur Rahman, has business experience for over 27 years in construction, electrical, substation, generator and 18 years of experience in CNG Sector and in recent times LPG sector. He did business with reputed Government firms like MES (Army, Navy, and Air force), DGDP and Private sector. A very clear conception about the subject of business and the untiring zeal & determination acquired from his father and with his own immense and vast experience in various industries Mr. Sabbir Hassan is Spearheading Mashiur Rahman & Co. Ltd. towards a successful path.



COMPANY PROFILE

Mashiur Rahman & Co. Ltd. philosophy has always been clearly marked out. The end user client is our partner or Manufacturer is the most important capital for us for this reason we do not merely offer very good products at the right price but a complete service. Attention to the client's needs, precision and punctuality of deliveries, consultation and information thus form our real day-to-day working standard.

AREA OF ACTIVITY

- Construction
- Construction Equipment
- CNG Refueling Station Machinery
- Industrial Compressors
- Software Development
- Industrial Natural Gas & Diesel Fuel Generator
- Auto gas Station Machineries (LPG)
- SNG
- Reticulated LPG Supply System
- Handicraft
- Agriculture

AFTER SALES SERVICE

Over the years, we have established a reputation as a specialist, capable of providing prompt, efficient and cost effective service through our extensive network. We have a flexible Spare parts department that offers delivery of any component within a short period throughout domestic market. Our technical assistance service tends daily to the demands of our customers. All our products have an extensive warranty. To provide best quality product & service to our client, we have a competent & efficient service with technical know-how and experience and more than 23 years of tradition as well as highly qualified team of specialists and a reliable after sales service.

MILESTONES OF MRCL

- 1952** Start of M/S. Mashiur Rahman & Co.
- 1958** Became 1st Class contractor & supplier in the East Pakistan's PWD & R&H
- 1967** Start of Nowapara Jute Mills Ltd.
- 1972** A-class contractor & supplier in MES
- 1980** Started Bangladesh Cold Storage Ltd.
- 1986** Started trading of Earth Moving Equipment.
- 1997** Company changed to Mashiur Rahman & Co. Ltd.
- 2001** Ventured into software Training & Development
- 2002** First CNG Station machineries supplied on turn key basis
- 2005** Became a Member of DCCI
- 2007** 25th CNG Compressor sold
- 2007** Became a Member of IBCCI
- 2008** 50th CNG Compressor sold, became supplier of highest number of gas engine driven compressors
- 2009** Started our own CNG Station
- 2009** Started Full fledge operations of MRSL (software Research & Development Center)
- 2010** Became a Member of BASIS
- 2012** MRCL Multi farm
- 2013** MR Pet craft (Handicraft)
- 2014** Started Business in LPG Sector
- 2015** Became a Member of APPA

CONSTRUCTION

Based on the fundamentals of Construction from 1952, Mashiur Rahman & Co. Ltd. built a lot of high-rise structural buildings, roads, bridges & culvert at various site in Bangladesh. Some of our renowned works are as follows:

- 1st Nine Storied Building in the Bangladesh Secretarial, Dhaka
- Teachers & Students Center (TSC) Complex at Dhaka University
- BRTC Bus Depot at Kalyanpur & Motijheel CIA, Dhaka
- Alijan Jute Mills Ltd. at Narshingdi
- Rice Godown (40,000 Ton) under PWD at Khulna
- Construction of DIT Staff Quarter at Banani; Dhaka
- Nowapara Jute Mills Ltd., Jessore

We specialize in large-scale civil constructions by leveraging new age construction technologies. For over six decades, we have been a part of prestigious projects across a multitude of verticals, creating everything from roads and bridges to culverts and high-rise buildings. We are proud to have introduced many new construction innovations in Bangladesh, which greatly benefited the industry.

CONSTRUCTION EQUIPMENTS

Mashiur Rahman & Co. Ltd. a diversified in trading of Earth Moving Equipment in 1986. From the beginning, its founder Late Mr. Mashiur Rahman was sure that the future of the company depended on 5 basic factors:

1. **Creative Thinking**
2. **Selecting the right Principal marketing**
3. **Highly specialized product marketing**
4. **Creating a successful and complete sales and service**
5. **Back up network**

Mashiur Rahman & Co. Ltd.'s trajectory was based on meeting these goals step by step and as a result, Mashiur Rahman & Co. Ltd. has become Bangladesh's official representative for renowned worldwide brands of products. Some of the Earth Moving Equipment we sale:

Hydraulic Ladder, Mixture Machine, Road roller, Hydraulic Excavator, Fork Lifter, Dump Truck.

GENERATOR

Mashiur Rahman & Co. Ltd., offers world class generating sets between 20 KVA to 2000 KVA available in various engine and alternator combinations from world leading companies in design and manufacturing of high quality diesel generating sets like Westec Power, Uk, Onis Visa S.P.A., Italy. The products of these companies are successful worldwide and sold over 170 countries. Annual production of these companies is in excess of 25000 units.

Engine: Perkins, Cummins, Deutz, Volvo Penta, John Deere.

Alternator: Newage Stamford, Mecc Alte, and Leroy Somer

MRCL CNG

Complete CNG Station Solution Provider

MRCL CNG offers Turn Key solutions for CNG Station like collecting various government permissions, setting up the station, supplying, erecting, and installing, commissioning & Maintenance of CNG Station machineries.

MRCL CNG is Sales representative & offers CNG Station machineries from the manufacturers:

COMPAC Dispensers, New Zealand

Fueling Technologies Inc., Canada

Everest Kanto Cylinders Ltd., India

We also bring compressors from renowned companies in europe

MASHIUR RAHMAN SOFTWARE LTD.

MRCL started its software operations in 2002 in partnership with Quasar Service Inc. USA . Customized Product development, web designing and dynamic website development were offered initially. Later in 2009 MRSL was formed as Research & Development services, developing solutions based on ideas . MRSL offers services that includes software-led IT solutions, Research & Development Services, web related solutions.

MR PET CRAFT

MR Pet Craft is a craft producing and exporting organization throughout the world on the basis of fair trade principles. MRCL promotes craft production through enhancing the skills of rural artisans in Bangladesh. All products are produced after careful analysis of Western taste and demands in items of design. We have trained people/rural artisans in Jessore, Tangail, Shatkhira and Barisal area in Bangladesh to collect raw materials and craft products.

To achieve the sustainable livelihood of marginalized underprivileged products through handicrafts production and marketing.

AUTO GAS



AUTO GAS

We are supplying complete Auto Gas equipment. The second most widely used alternative automotive fuel in the world. We MRCL have already sold 09 LPG Auto gas Station equipments in which 06 stations we have already installed. We are exclusive agent of LA Energy
LPG Underground/ Above ground Tank (As Per design)
Mepsan LPG dispenser double nozzle
La-TB10 turbine pump set
Complete set of all accessories for Installation
Flex pipe 1" , 1" flange fittings for flex pipe, 3/4" flex pipe
3/4" flange fittings for flex pipe
Installation

STORAGE TANK DETAILS

Tank Type : Horizontal
Country of Origin : Turkey
Capacity : 10,000-40,000 Litre
Design Temp : 40 Deg C to + 50 Deg C
Design Pressure : 15 bar ~ 17.5 bar
Test Pressure : 20 bar ~ 25 bar
Tank Installation : Above Ground/ Underground / Mounded



LA-TB10 TURBINE PUMP

LPG PUMP

Specifications

Max Flow @ 2900 RPM.....140 L/min
Max Differential Pressure @ 2900 RPM1375 kPa
Hydrostatic test Pressure..... 7000kPa
Max Speed..... 3500 RPM
Power Range..... To 7.5 KW



PORTING

Inlet.....Flanged DN 50(2") ANSI Class 300
Outlet..... Flanged DN 25(1") ANSI Class 300

FEATURES

- ✓ Direct coupled to 2,880 RPM or 3,500 RPM motors
- ✓ Quiet, Vibration free operation
- ✓ Other drive options: Vee belt, engine or PTO
- ✓ Low maintenance
- ✓ Balanced Mechanical Seal - precision lapped faces- excellent service life
- ✓ Throttle Bush - increased safety - meets API 610.
- ✓ Low NPSH booster first stage impeller.
- ✓ Flanged Porting - simple, safe operation

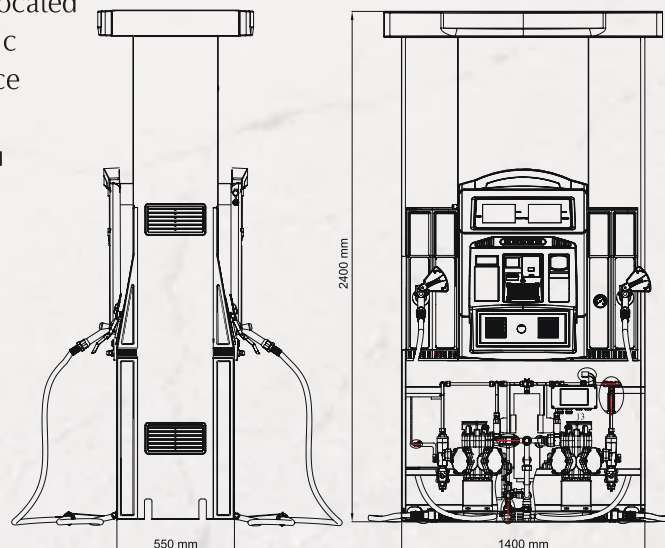


TYPICAL SERVICES

- | | |
|------------------------|---------------------------------------|
| ✓ Autogas Applications | ✓ Forklift Refuelling |
| ✓ Bulk Transfer | ✓ Agricultural Industries |
| ✓ Aerosol Industries | ✓ Marine Dispensing |
| ✓ Cylinder Filling | ✓ Driveway Dispensing - up to 4 hoses |
| ✓ Bulk Filling | ✓ Direct Burner/Vaporiser feed |

DISPENSER BODY AND GENERAL FEATURES

- 🔥 Maximum 50 lt/min, minimum 5 lt/min flow rate
- 🔥 25 Bar maximum working pressure
- 🔥 -25 °C / + 55 °C ambient temperature
- 🔥 -20 °C / + 60 °C liquid temperature
- 🔥 ± % 0,5 meter ratio and high sensivity
- 🔥 Cladded Frame System enabling easy -replacement at the field.
- 🔥 Corrosion resistant internal parts
- 🔥 Aesthetic appearance and high resistance in nozzle boots, colum components, adaptor plastic and on-column ventilation all made of engineering plastic.
- 🔥 The panel made of engineering plastic and has specific place for POS-Cash Registers
- 🔥 Corrosion resistant body made of robust materials
- 🔥 MID and ATEX certificated hydraulic units
- 🔥 Protection metal plates located on each side of electronic panel providing resistance against nozzle hits
- 🔥 Optional language menu



ELECTRONIC AND HYDRAULIC FEATURES

- Modular electrical units provide easy maintenance
- PID data backup and security systems
- Data security and accurate measurement by smart pulsar system
- Low leakage risk by modular hydraulic system design and advanced seal system
- Problem-free operation with touch keypad
- Protect against accidents by belt protection cover
- 7 digit electromechanical totalizer
- High sensitivity settings by electronic calibration
- High sensitivity by proportional valve
- Liter/Money preset sales option
- Backlight / LCD information screen
- LCD screen system which show error codes, program menu codes and instructions
- Compact gear pump providing high efficiency
- Protocol options provide effective communication with different automation systems available in different regions of the world

THERMOFLEX -LPG FLEXIBLE PIPE WORK FOR LPG TRANSPORT

The strength of the pipe is entirely determined by the braid and NOT by the wall thickness making the Thermoflex®-LPG pipe extremely flexible and easy & fast to install!

No corrosion

35bar rated pressure

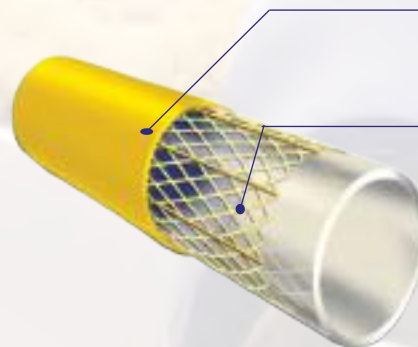
Flexible reinforced pipe

Installed in continuous runs

Less pressure drop than steel

Reduced installation time and cost (hours vs. days)

The safest and most cost efficient pipework to install



Outer jacket: Yellow coloured Polypropylene, abrasion resistant for braid protection

Reinforcement: Aramid fibers braiding Radial (criss-cross) providing strength Longitudinal braid preventing elongation

Inner liner (Base tube): Nylon inner liner compatible with LPG, both in gas and liquid phase



FEATURES COMPOSITION

- **Max. operating temperatures:** -40°C to +65°C / -40°F to 149°F
- **Pipe's braid design strength:** 2,2 times the max. operating pressure
- **Max operating pressure:** 35bar - 500psi
- **Maximum testing pressure:** 52bar - 760psi
- **Min. installation temperature:** 0°C (pipe must be heated before uncoiling when lower temp.)
- **Crush resistance:** 25 to 30 kg/cm²/284psi to 427psi (depending of the pipe diameter)
- **Max. pull force :** 5.000 kg - 11,000lbs
- **Standard pipe diameters:** DN20, DN25 and DN32 (larger diameters on demand)
- Disposable reels with a standard length of 200m (659ft) or 400m (1318ft) with marks in meter or foot
- Only for buried applications (directly in trench or in secondary duct)

INSTALLATION OF THE FITTINGS

The NPT male thread or flanged fittings are crimped on site (eventually in a workshop) by means of a (hand operated) hydraulic radial crimping machine. The crimping action will lock the pipe's braid between the insert and the ferrule.



FLEXIBLE ENDLESS PIPE SYSTEM FOR LPG IN REFUELING STATION CONSTRUCTION

SYSTEM ADVANTAGES :

- ⚙ Fast and simple to install without welding and x-raying of welds on site
- ⚙ The most cost effective pipe system

GENERAL DESCRIPTION :

LPG flex piping is suitable for automotive LPG (autogas) buried installations of service stations in both vapor and liquid phase.

It is a single walled flexible pipe system designed for the underground transport of LPG. Typically piping is used as an underground liquid feed line and vapor return between LPG storage tanks and the liquid gas dispenser in refueling stations .



MATERIALS	MATERIAL TYPES	STANDARTS
INTERNAL PIPE	1.4404 / 2R	EN 100088-2 / 2005
KNITTING STRIP	1.4301/304	EN 10088-3 / 2005
POLYESYER FILM	PED A 460 HAZY FILM	-
POLYETHYLENE COATING	G 03-5	-
POLYETHYLENE PAINT	PIGMENT BLACK 7	-
CONNECTION PARTS	1.4301/1.4307/304L	EN 10088-3 / 2005



DESIGN PARAMETERS

- ⚙ LPG FLEX piping is designed for operating temperatures up to -50C and operating pressure of PN25 (360PSI).
- ⚙ It is a endless flex pipe system. Inner pipe is stainless steel and it has stainless steel reinforcement strips. It is covered by low density PE to protect the pipe under ground.
- ⚙ Piping can be used 300 meters in same time without any add or any welding.
- ⚙ No need to use elbow, it can be bended accordingly .
- ⚙ It is best , safest and easy engineering way to carry LPG from storage to Lpg dispenser.



PICTURES OF INSTALLATION





RETICULATED GAS SYSTEM

For unavailability of Natural gas in residential houses people are using LPG cylinders for cooking purposes. It is risky and causes inconvenience to move in different floors. We provide a full turnkey solution in residential area by the installation of LPG tank and GSU, which is safer and beneficial.

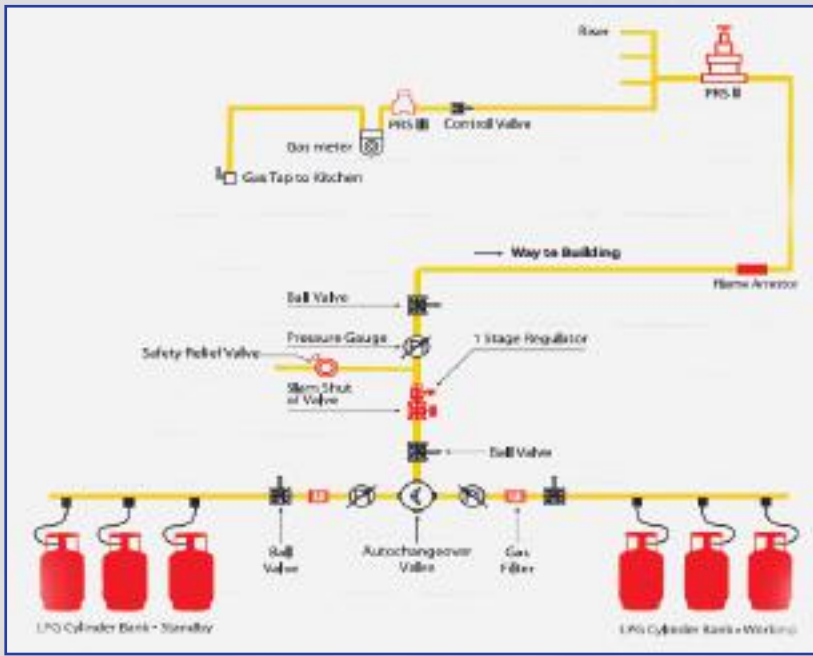
RETICULATED SYSTEM EXPLANATIONS

LPG -Reticulated skid system control panel controls LPG vaporizer automatically. It also controls if vaporizer is on or off and controls gas leak detector in skid ,if there is any leakage , system warns by light and horn.

LPG panel controls pressure of the system to control LPG level in skid cylinders , if pressure less then default value that means cylinders are getting empty soon that gives technician to change cylinders with new ones

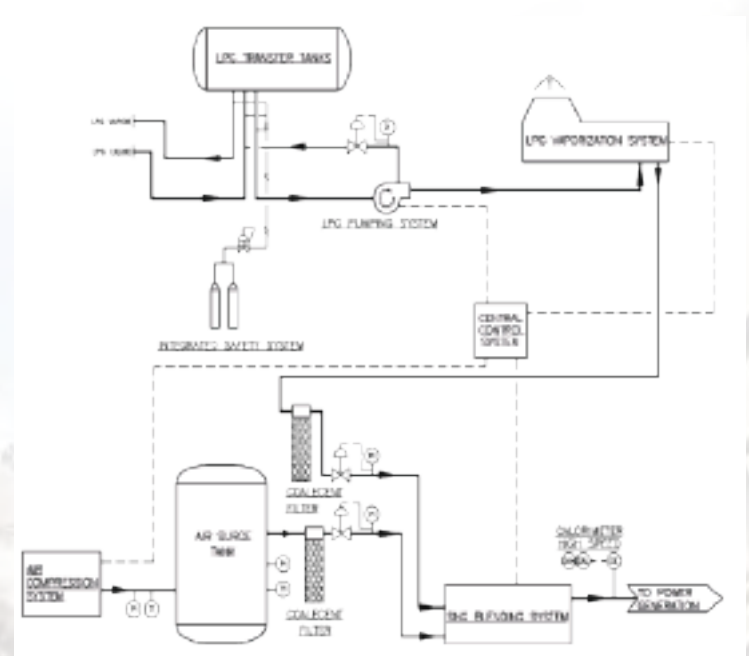
LPG Vaporizer (red) warms up the liquid LPG to convert it to gas phases. Liquid flow is controlled by solenoid valve placed in access of vaporizer. Temperature switch keeps the hot water in constant temperature. Gas discharge temperature also under control by temperature gauges. System consists of gas safety relief valve. All equipments are Ex-proof.

System consist of gas leak detector to control any possible leakage.



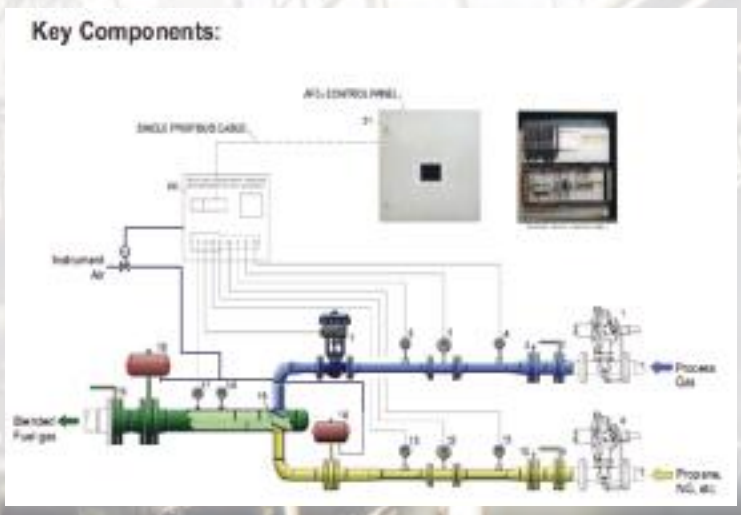


SNG



SNG FLOW DIAGRAM

Synthetic natural gas (SNG), made with LPG is a direct substitute for natural gas. It has virtually identical combustion characteristics. It can be used alone or mixed with natural gas. No changes are required in the burners, regulators or gas jets. It is good to use I Industries as a substitute/standby alternative fuel.





SOME OF THE IMPORTANT CLIENTELE IN VARIOUS SECTORS OF MRCL

GENERATOR CNG

- 500 KVA Genset for MIST at Mirpur Cantonment
- 500 KVA Genset for DSCSC's at Mirpur Cantonment
- 500 KVA Genset for Nowapara Jute Mills Ltd.
- 350 KVA Genset for Marshall Cold Storage
- 250 KVA Genset for Naval Head Quarters
- 250 KVA Genset with ATS for ICU operation theater at CMH Dhaka Cantonment
- 250 KVA Genset for MRD OR'S Quarters at Shaheed Mannan line Dhaka
- 148 KVA for Hamid Real Estate Ltd.
- 100 KVA Genset (Saint Martin) for BNS ISHA Khan Chittagong
- 100 KVA for Kanan T radars
- 50 KVA Genset for DGFJ Building at Comilla Cantonment
- 45 KVA for Chitra Housing
- 30 KVA for Reliance Tannery Ltd

LPG AUTO GAS STATION

- Trade Consortium
- Albattros CNG Filling Station
- Hannan CNG Filling Station
- H.B CNG Filling Station
- Hajigonj Filling Station
- Golden oil Filling Station
- Marco Filling Station
- Soma LP Gas Filling Station
- Safe LP Gas Ltd.
- Allah Bharasha CNG
- Al-Mukaddim CNG Station
- Anower & Brothers CNG Filling Station
- Azmat Ali Filling Station
- Bablu CNG Filling Station
- Belabo Filling Station
- Bhawal Filling Station
- City Overseas Ltd., Gendaria
- City Overseas Ltd., Kalunagar, Dhaka
- City Overseas Ltd., Sylhet
- Denso CNG Filling Station
- Dhamrai CNG Station
- GEP Holdings Ltd., (Khulshi Filling Station)
- H.B. CNG Station
- Kamal CNG Filling Station
- Madabdi CNG Filling Station
- Mahbub Filling
- Modern Technology CNG Filling Station and Conversion Co.
- N.H. Chowdhury Traders
- N.M. Filling Station
- Paharika CNG Filling Station
- Quazi Traders Filling Station
- Rubel Filling Station
- S.N. Corporation
- SNS CNG
- Star Filling Station
- Suzan Filling Station
- Titas Filling Station
- Trade Consortium
- Union Trading Corporation
- Winner Energy Center

Still many more important and esteemed clients apart from the above mentioned



Mashur Rahman & Co. Ltd.

House No. 67, Road No. 11-A, Dhanmondi, Dhaka-1209, Bangladesh
Tel: +88-02-9111834, 9111839, Fax: +88-02-8191529, Email: info@mashurgroup.com
www.mashurgroup.com

Final Complete After Sales And Service Backup Ne